

**GEORGIA**

**GEORGIA**

**GEORGIA**

**GEORGIA**

**GEORGIA**

**Department  
of Corrections**



**Education & Programs**

# ***Correctional Education & Programs – Preparing Returning Citizens for Successful Re-entry***

***L. C. (Buster) Evans, Ed.D. – Asst. Commissioner  
Educational Programs Team***

***June 24, 2015***



Criminal Justice

March 31, 2015

## A Republican Governor Is Leading the Country's Most Successful Prison Reform

215  Tweet

3.2k  Share

By [Naomi Shavin](#)  [@naomimaeshavin](#)

**D**uring his second inaugural address this past January, Georgia Governor Nathan Deal [shared](#) the story of Sean Walker. After serving 12 years of a



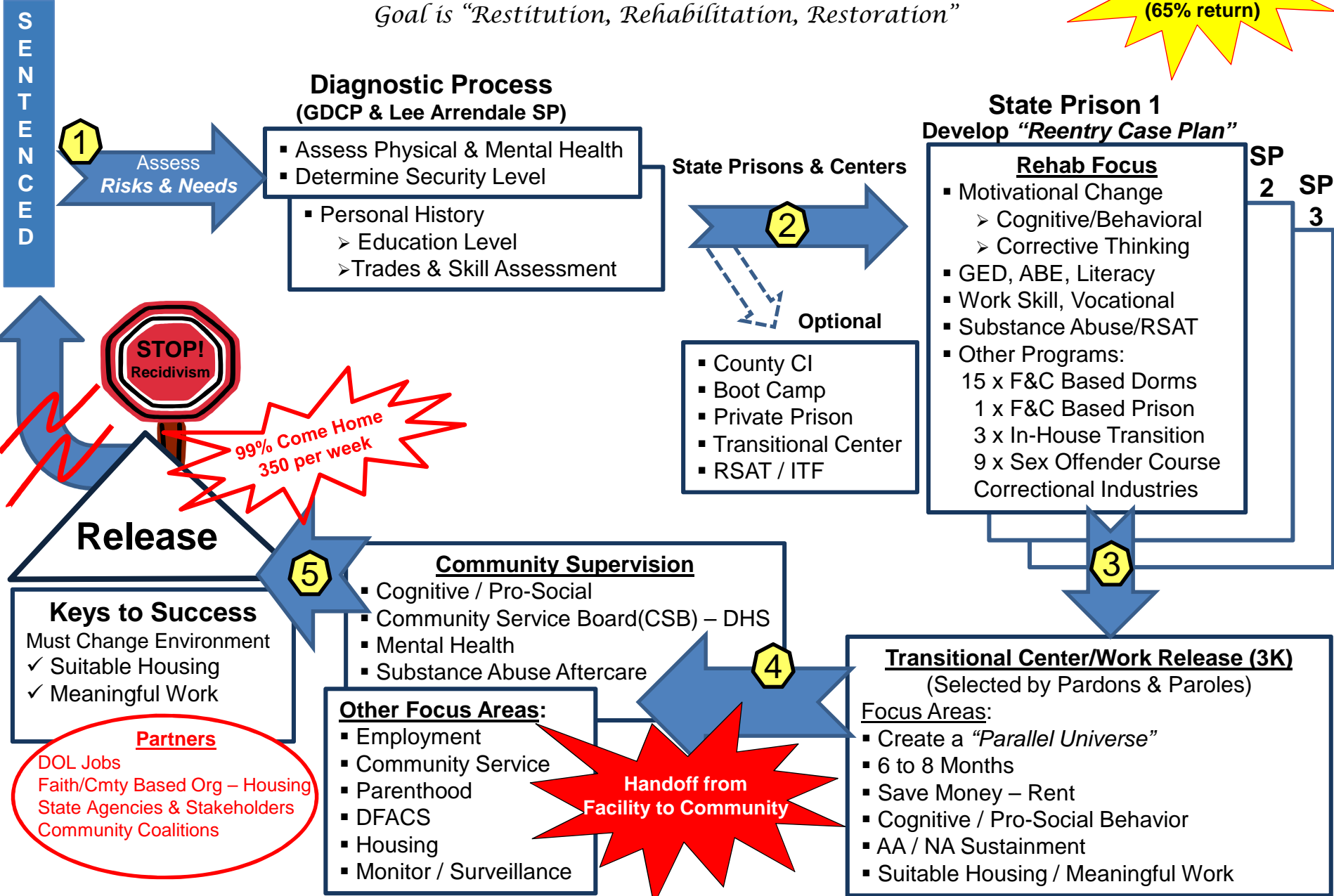
## General Overview - Agenda

- The Issue of Criminal Justice Reform
- Early Successes
- Preparing Returning Citizens Educationally
- Risk Reduction Programs
- Re-entry Services
- Special Re-Entry Focus – Mental Health
- Special Re-Entry Focus – Sex Offenders
- Special Re-Entry Focus - Veterans

# Georgia Reentry Model

*“Reentry begins at the earliest point”*

*Goal is “Restitution, Rehabilitation, Restoration”*



# Re-Entry Skills Handbook

Reentry is the process of transition that should begin at the offender's earliest point of entry into prison, probation or at pre-sentence guided by offender assessment and evidenced based interventions.

Reentry is a process to provide effective opportunities for offenders to achieve positive change (GDC vision) and to be a more pro-social contributor to society.

Reentry is a process to promote public safety through collaborative partnerships that reflects a seamless system that ensures all returning offenders are law abiding, productive community citizens.

Reentry's mission is to establish effective methods that permeate all levels of affected agencies and organizations to reduce recidivism through collaborative partnerships that support offender transition to the community.



## Goals of Re-entry

### Goals of Reentry

- To build individual capacity of the offender to be a productive member of his/her family and community
- To link offenders to program services necessary for successful transition and reentry into the community
- To increase the community and correctional capacity to address the offender's needs and identify community resources to match assessed needs
- To enhance public safety by reducing recidivism among the formerly incarcerated population
- To promote public safety through collaborative partnerships that support offender transition to the community



## Some Key Re-Entry Facts

- Georgia Inmate Population Approximates 55,000**
- 95% of Inmates Will Eventually Be Released From Prison**
- The Average Length of Incarceration is 3.1 Years for Males and 2.4 Years for Females**
- Approximately 20,000 Inmates are Released From Prison Each Year in Georgia**
- Approximately 60% of Inmates Do Not Have a High School Diploma or GED**
- Approximately 200 Inmates With Mental Health Diagnosis Are Released Each Month in Georgia**
- Approximately 1 in 3 Returning Citizens Will Return to Prison Within 3 Years**



# How Do We Compare? Rates of Incarceration

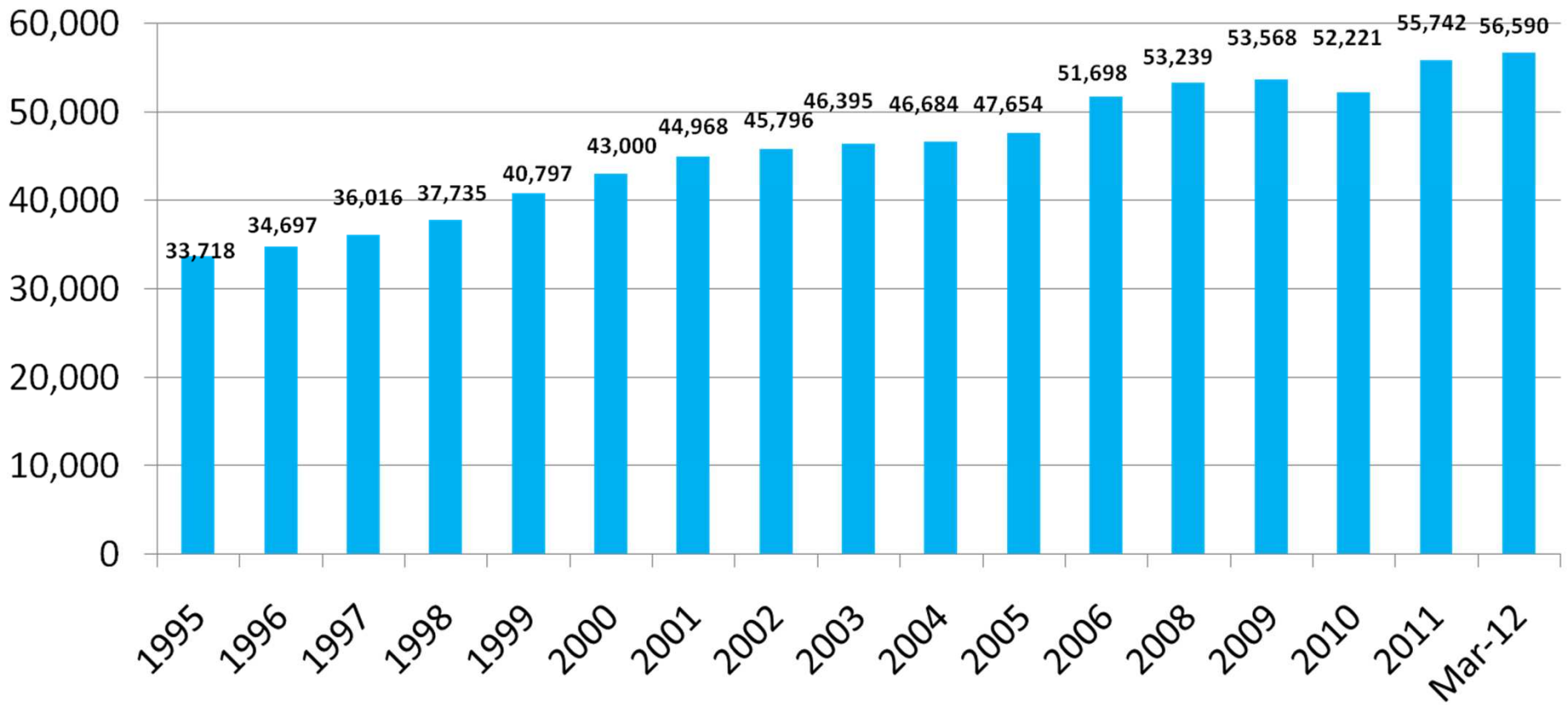
Nation	Year	Rates of Incarceration
United States	1925 – 1970	100 per 100,000 citizens
	1970 – 2000	500 per 100,000 citizens
	2000 – 2010	716 per 100,000 citizens
	2010 – 2013	Declining
Russia	2013	568 per 100,000 citizens
Spain	2013	159 per 100,000 citizens
China	2013	122 per 100,000 citizens
Canada	2013	114 per 100,000 citizens
France	2013	96 per 100,000 citizens
Sweden	2013	78 per 100,000 citizens





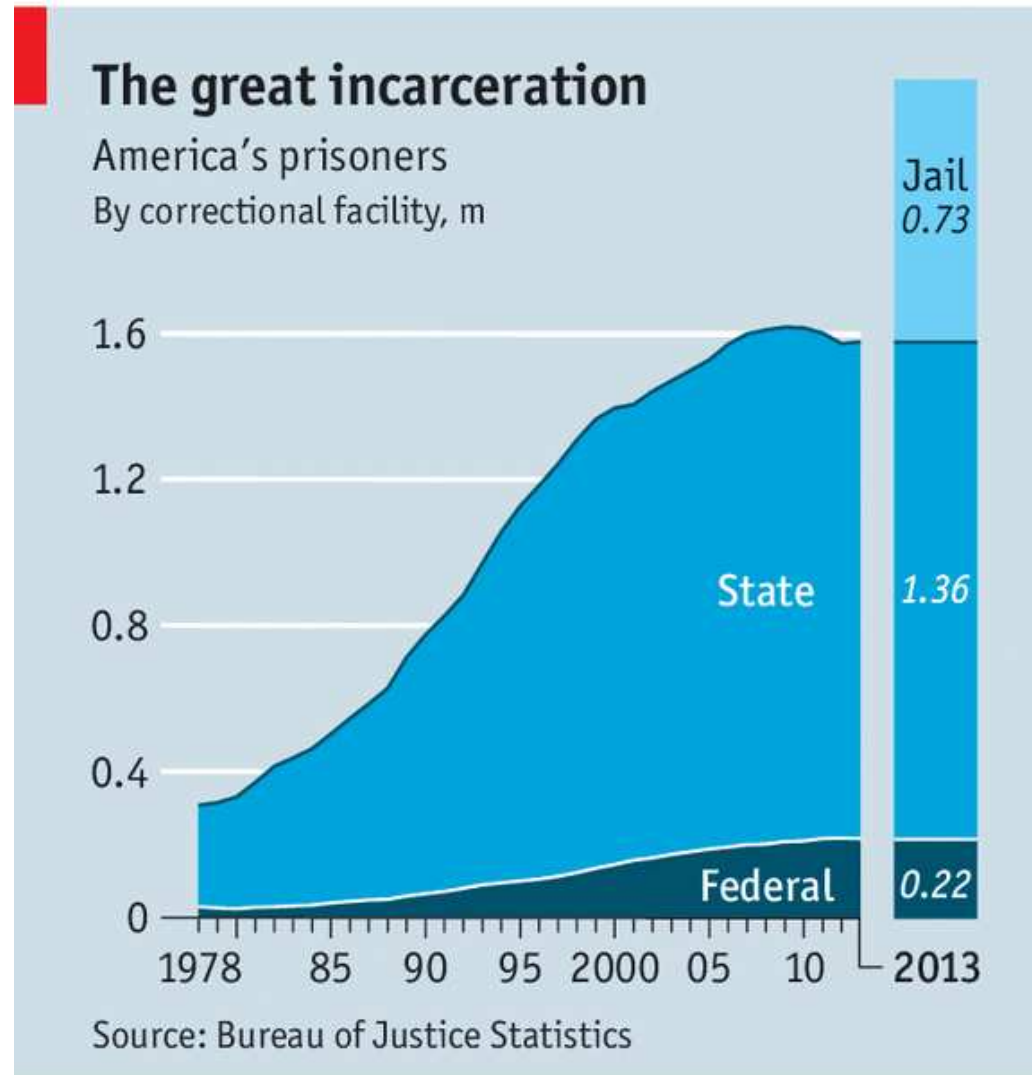
# GDC's Total Population 1995- March 2012

## Total POP





# Prison Population Growth in America



Economist.com



# Why are we incarcerating so many people?

## Rates of Incarceration

- **War on Drugs**
- **Tough on Crime Legislation**
  - Mandatory Sentencing Laws
  - Three Strikes and You're Out
  - Truth-In-Sentencing
  - Zero Tolerance
  - Seven Deadly Sins
  - Quality of Life Policy
- **Defunding Community Programs**
  - Substance Abuse Programs
  - Community MH Programs
  - State Psychiatric Hospitals



# Criminal Justice Reform in Georgia

## 3 “Legs” of Georgia’s Criminal Justice Reform

- Adult Courts – creating a variety of accountability courts helping keep non-violent offenders out of prison.**
- Juvenile Courts – similar to adult accountabilities.**
- Re-entry – Prisoner Re-entry and educational programs.**

## Early Results

- Reduction of non-violent offenders in prison/under sentence in Georgia by approximately 10,000 inmates.**
- Reduction of African American Males in prison by 19.1%.**
- Reduction of African American Females in prison by 34%.**
- CJ Reform efforts gaining national attention.**

---

“BY ALL COUNTS, CRIMINAL JUSTICE IS ONE OF THE VERY FEW ISSUES THAT THERE IS BIPARTISAN AGREEMENT ON AND IN THE CURRENT ENVIRONMENT THERE IS SOMETHING LAWMAKERS CAN DO TO POSITIVELY AFFECT THE COUNTRY.”

– INIMAI CHETTIAR, BRENNAN CENTER FOR JUSTICE



# Why Correctional Education?

## Cause

- Decreased recidivism rates** for individuals who have received an education while incarcerated. Approximately 60% do not have a hs diploma or GED.
- Decreased levels of violence** while incarcerated and after release.
- Positive effect on children** with incarcerated parents in pursuing their own educational endeavors.
- Most inmates will be released.** Educational programs allow them to have something to fall back on in the real world. Approximately 20,000 inmates return home in Georgia each year.

## Return on Investment

- For every **\$1** invested in correctional education, there is **\$5** saved in future incarceration costs.

*“Overall, this study shows that the debate should no longer be about whether correctional education is effective or cost-effective but rather where the gaps in our knowledge are and opportunities to move the field forward.”*

**-The Rand Corporation, 2014**

- For every **\$1** invested in vocational/technical programs in corrections, there is **\$12** saved in future incarceration costs

**(Source: Washington State Institute for Public Policy, 2012)**



## Why Correctional Education Can Be The Most Rewarding Job in American Education?

<http://www.youtube.com/watch?v=MAQihRikgZM>

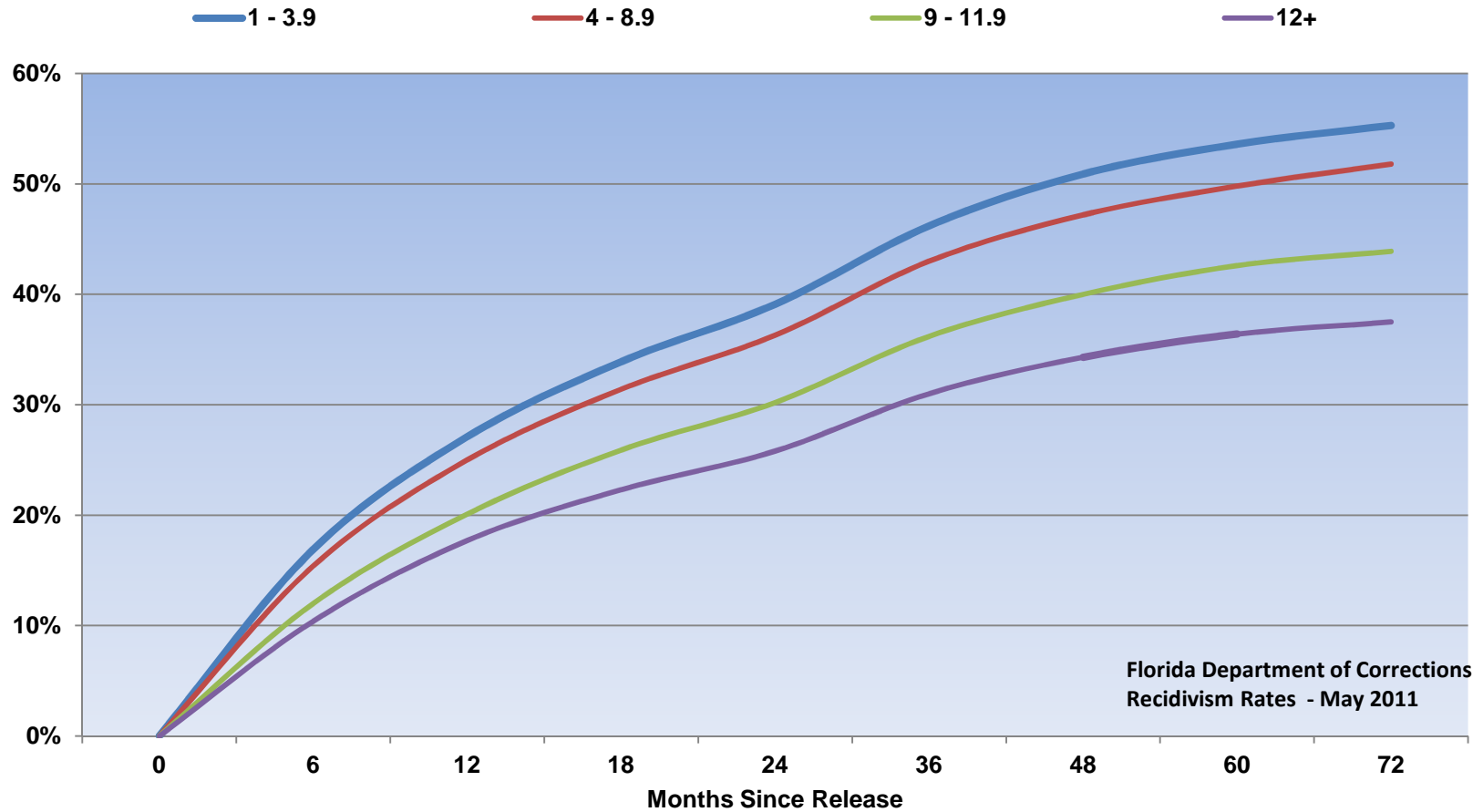
- Students come to class
- Don't bring cell phones
- Don't bring weapons
- Are not high or on illicit drugs
- Many inmate students are actually very appreciative and engaged
- You have on site school resource officers
- You have several "parapros" per class
- No CRCT's, EOCT's, SAT's, etc.
- No extra duties
- No parent conferences
- No TKES & LKES



# Variables Impacting Recidivism Rates



**RECIDIVISM RATES BY  
LAST TESTED EDUCATION GRADE**



# Georgia Inmate Education Levels – 2015

Inmate Educational Levels				
Education Level	Males	Females	Total	Cumulative
No school at all	12	0	12	12
Grade 1	27	3	30	42
Grade 2	63	1	64	106
Grade 3	117	3	120	226
Grade 4	118	3	121	347
Grade 5	163	9	172	519
Grade 6	578	26	604	1,123
Grade 7	811	66	877	2,000
Grade 8	2,909	249	3,158	5,158
Grade 9	5,504	300	5,804	10,962
Grade 10	7,371	383	7,754	18,716
Grade 11	7,575	344	7,919	26,635
Grade 12 or GED	16,937	1,234	18,171	44,806
Some tech school	251	91	342	45,148
Completed tech school	276	122	398	45,546
College, 1 year	1,490	181	1,671	47,217
College, 2 year	1,891	215	2,106	49,323
College, 3 year	484	61	545	49,868
Bachelor's degree	617	93	710	50,578
Master's degree	117	21	138	50,716
Ph.D. degree	21	4	25	50,741
Law degree	22	5	27	50,768
Some medical school	2	1	3	50,771
Medical degree	12	0	12	50,783
<b>Total</b>	<b>47,368</b>	<b>3,415</b>	<b>50,783</b>	
Not Reported	2,423	126	2,549	
<b>Grand Total</b>	<b>49,791</b>	<b>3,541</b>	<b>53,332</b>	
<b>Less HS/GED In System</b>	<b>Number</b>	<b>Percentage</b>		
Population Without GED	26,635	52.45%		
Males Without HS/GED	25,248	53.30%		
Females Without HS/GED	1,387	40.61%		

Over  
5000  
never  
made  
it to  
high  
school!







## Educational Initiatives

- ❑ **GED Program Enhancements**: pre-incarceration, facilities, etc.
- ❑ Continue to increased emphasis on **Reading and Literacy**
- ❑ **Charter School Programming** Fully Implemented – HS Graduates Emerge from Department of Corrections. Arrendale and Burruss operations.
- ❑ GED Programs at all **Probation Day Reporting Centers**
- ❑ GED Programs at all **Transition Centers**
- ❑ **Career Technical Program Expansions**: Welding, Diesel & Auto Mechanics, Horticulture, CDL, and others
- ❑ **Career Technical Expansions** in Privately Operated Facilities as Identified
- ❑ **Online & Traditional Post-secondary** (college programming) put in place for veterans in 3 veterans dorms & 1 other medium security facility in Georgia
- ❑ **Computer based/Tablet Based Content** access for education and programming

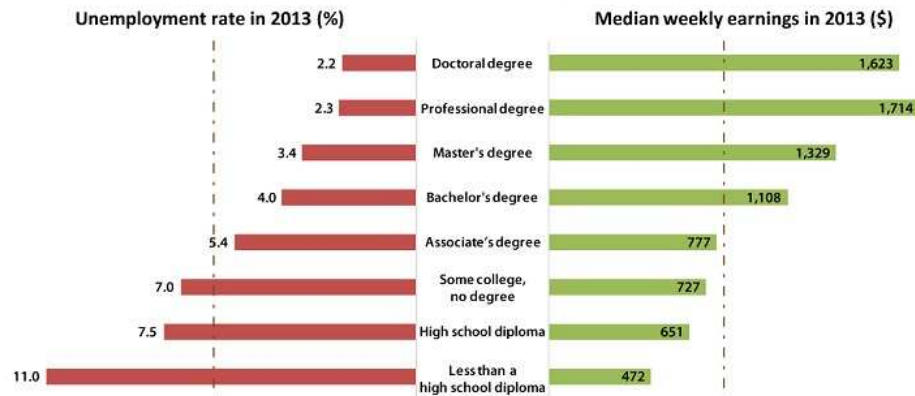


# GED Enhancements

Facility Type	Participants	Annual Graduates
Probation Division	690	250
Probation Detention	800**	400**
Prison Sites	3116**	1558**
Transition Centers	400	200
<u>County Camps</u>	<u>460</u>	<u>230</u>
<b>System Totals</b>	<b>5466**</b>	<b>2500</b>

Why the GED or Diploma??? More evidence!

**Earnings and unemployment rates by educational attainment**



Note: Data are for persons age 25 and over. Earnings are for full-time wage and salary workers. Source: Current Population Survey, U.S. Bureau of Labor Statistics, U.S. Department of Labor



# Educational Program Participation

(February 2015)

<u>Academic Programs</u>	<u>Participants</u>
Literacy (LRR)	705
Adult Basic Education (ABE)	2578
GED Prep	2223
<u>GED Fast Track</u>	<u>122</u>
Total	5,628

<u>Career &amp; Workbase Programs</u>	<u>Participation</u>
Vocational	1304
<u>OJT</u>	<u>1743</u>
Total	3047



# Charter High Program

No provision for an inmate to receive a school diploma while incarcerated in a Department of Corrections facility.

- ❑ **July 2015** – 15 “first ever” high school diploma recipients while incarcerated in an adult prison facility in Georgia” as 15 females will graduate as MEC graduates at Arrendale State Prison.
- ❑ **August 2015** – Begin teaching, via a blended model, high school courses leading to a high school diploma at Burruss Correctional Training Center for **males**.

Facility	Participants	Annual Graduates
Arrendale SP	40	20
Burruss Correctional Facility	<u>60</u>	<u>30</u>
<b>System Total</b>	<b>100</b>	<b>50</b>



Georgia Department of Corrections  
 in partnership with  
 Mountain Education Charter School  
 (MECC)

Lee Arrendale State Prison | Alto, Ga.  
 January 5, 2015



-14 students currently enrolled  
 -five completed high school diploma





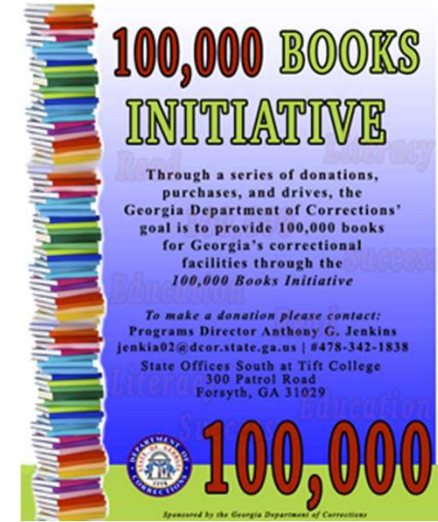
# Vocational Programs

CTAE Field	Participants	Annual Graduates	CTAE Field	Participants	Annual Graduates
A+ Certification	30	25	Diesel Mechanic	100	100
Animal Healthcare	80	75	Drafting	25	15
Auto Body Repair / Auto Mechanics / Auto Painting	65	50	Electrical Wiring	200	100
Barbering	30	25	Food Preparation/Culinary Arts	65	50
Braille Transcription	30	25	Graphic Arts/Printing	75	60
Building Maintenance	20	18	Heating and Air Conditioning	70	50
Carpentry/Woodworking	200	175	Horticulture	200	100
Commercial Driver's License	25	20	Industrial Maintenance (Construction, cabinet making, air conditioning, electro mechanical)	40	35
Computer/Office Technology	1500	1100	Plumbing, Service Industry	200	175
Cosmetology	60	40	Welding	200	200
			<b>System Total</b>	<b>3215</b>	<b>2438</b>



# 100,000 Book Initiative

- Reading influences
  - Who we become
  - Literacy abilities
  - Knowledge levels
- 35 Georgia facilities receive 3,000 books
- Partner with religious groups, schools, and corporations to provide inspirational, motivational, and educational materials suitable for inmate populations
- Major partners to date (50,000 + books)
- Current spokespersons & partners



*HeartBound Ministries*

*Remember those in prison as if you were their fellow prisoners... Hebrews 13:3*





# Greatest Strengths/Enablers

- Executive & departmental support
- Phenomenal internal and external acceptance
- Research based rationale
- Strong desire among inmates for educational and vocational programs
- Interested and willing partnerships
- Availability of traditional and online resources
- Correctional education is an attractive option for educators
- Growing availability of “solutions” for correctional education
- Inmate teaching assistants





# Ongoing Challenges

- New GED Exam
  - Significantly reduced passing rates
  - Computer administered exam
  - Cost of exam (budget helps rectify)
- CTAE teachers for specialized programs
- Adding technology to facilities not designed for its use
- Void of effective instructional technology
- Classroom space is an issue in some locations and continues to be addressed
- Insuring teacher effectiveness
- Expanding educational time by scheduling and other innovations
- Need to expand partnerships with TCSG and local technical colleges
- Pathways are limited to career programs
- Resistant “cultures” that exist among some inmates and some personnel



# FY 16 Big Budget Update (Education)

<input type="checkbox"/> Provide funds for diesel mechanic and welding Voc. Ed programs in state prisons	\$2,000,000 & \$1,287,996
<input type="checkbox"/> Increase funds for Charter High School – add 4 positions & operating exp at 2 facilities	\$481,839
<input type="checkbox"/> Increase funds for 48 positions and operating expenses to support educational enhancements to academic & vocational programs	\$5,997,840
<input type="checkbox"/> Increase funds for GED testing in state prisons	\$256,000
<input type="checkbox"/> Annualize funds for GED fast track program – add 6 positions & operating expenses	\$1,307,222
<input type="checkbox"/> Annualize increase of funds for GED Prep Learning Centers in Day Reporting Centers	\$534,088
<input type="checkbox"/> Increase funds for GED Prep Learning Centers in Transition Centers	\$304,957

**\$12,169,942**

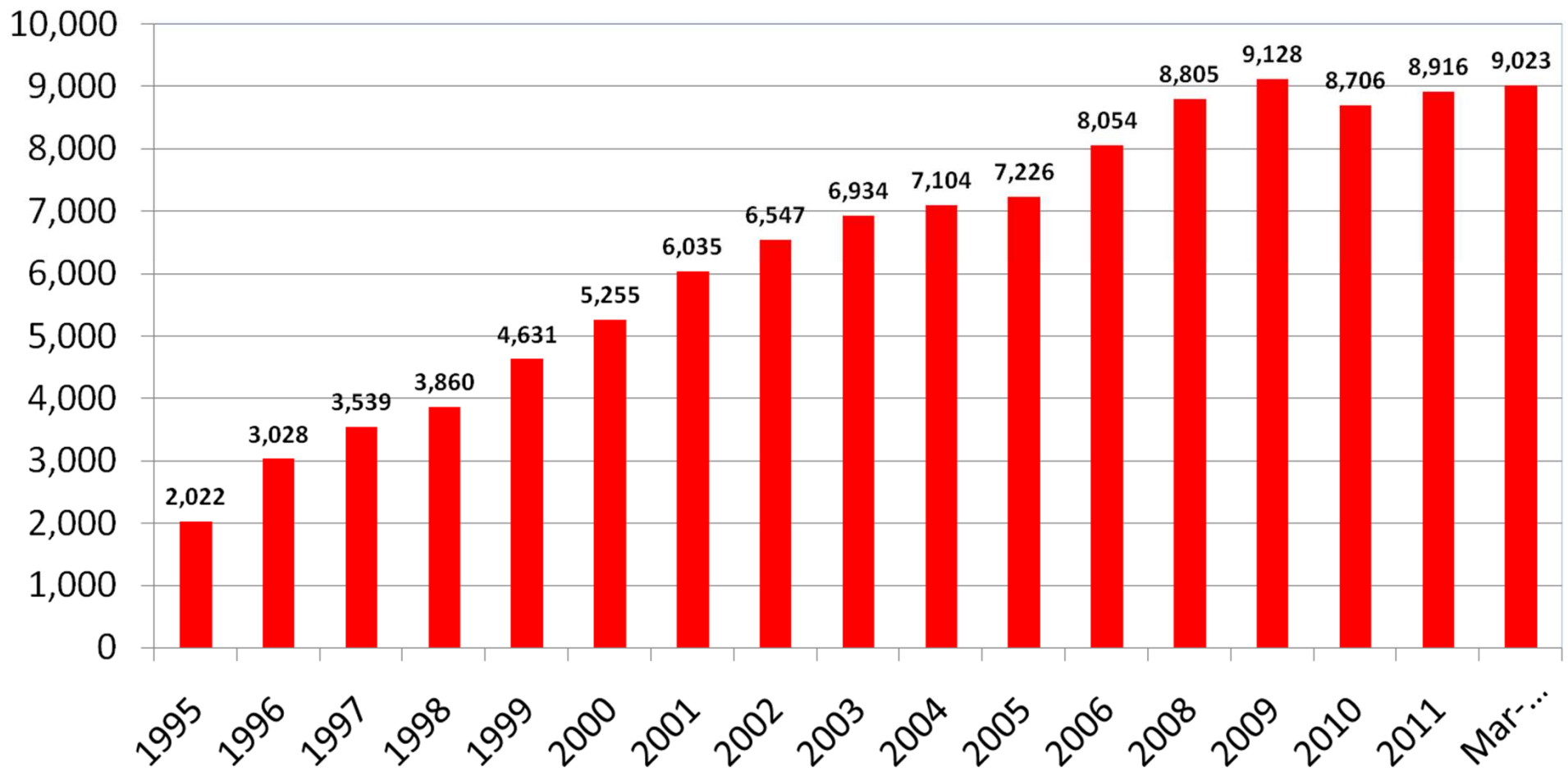


# Mental Health Trends and Challenges



# Who are we Incarcerating?

## Mental Health Population





# Who are we incarcerating?

## Veterans

- Veterans make up 10% of the incarcerated population
- 15% of male veterans are diagnosed with PTSD vs. 8% of non-vets
- People diagnosed with PTSD are 4.5 times more likely to be convicted of a violent act than those without PTSD
- 33% of our homeless population is veterans
- One veteran commits suicide every 65 minutes



# Active Inmates With Mental Health Level 2 and Above During CY 2014



MH Treatment Level	Count/Male	Count/Female	Total
2-Receiving outpatient treatment	5388	1723	7111
3-Inpatient, moderate treatment	1491	47	1538
4-Inpatient, intensive treatment	340	18	358
5-Undergoing Crisis Intervention	23		23
6-Hospital for criminality insane	2		2
Total	7244	1788	9032



# Mental Health Inmate Releases During CY 2014



MH Treatment Level	Count/Male	Count/Female	Total
1-No problem	3182	825	4007
2-Receiving outpatient treatment	1193	508	1701
3-Inpatient, moderate treatment	199	6	205
4-Inpatient, intensive treatment	22	3	25
6-Hospital for Criminally insane	1		1
Total	4597	1342	5939



# Mental Health Inmates

## During CY 2014-Number of Prior Ga Incarcerations



Num of Prior GA Incarcerations	Count/Male	Count/Female	Total
0	3692	1272	4964
1	1360	239	1599
2	831	121	952
3	488	59	547
4	334	33	367
5	235	27	262
More than 5	304	37	341
Total	7244	1788	9032





# Mental Health - Facility Demographics



- 35 GDC facilities that have mental health programs/services
- 4 Private facilities with mental health programs/services

[As of June 10, 2015]

- Total GDC Mental Health Population-8894;
  - Total Private Prison MH Population - 812
- Grand Total - 9706 (17.5%) of the Total Offender Population (55227)
- Level 2 offenders- 7834 or (81%) of the mental health population
  - Level 3 offenders- 1,490 or (15%) of the mental health population
  - Level 4 offenders- 356 or (4%) of the mental health population
  - Level 5 offenders- 26 or (.02%) of the mental health population

[As of March 2015]

- Total Mental Health Offenders on psychotropic medications 6,376 or (66%)
  - Level 2 offenders on psychotropic medications- 5,076 or (80%)
  - Level 3 offenders on psychotropic medications- 1,132 or (18%)
  - Level 4 offenders on psychotropic medications- 154 or (2%)
  - Level 5 offenders on psychotropic medications- 14 or (.02%)



# Mental Health Reentry Pre/Post Release Needs



- Community MH Appointment
- Release Medication- 30 day supply
- Income Assistance
- Housing
- ID/ID Tools (Birth Cert, SS Card, State ID)
- Substance Abuse Referrals
- Medical Appointment/Referrals
- Prison to Community Mentoring
- VA Appointment/Benefits (if applicable)



# Reentry and Transitional Services



This program is not specifically for MH but does not exclude due to mental illness

- Training To Work (T2W2)
  - Partnership with Urban League of Greater Atlanta and The Department of Labor
- A Reentry Initiative that is a pathway to employment
- Support 250 offenders in the Fulton, Dekalb, Clayton and Cobb Counties
- Inmates in the Transitional Centers
- Dual academic program that offers GED and Occupational Career Program



# Reentry and Transitional Service



- Offender Employment Specialist Training:
  - Partnership with Federal Bureau of Prisons
  - Statewide training for GP Counselors, MH Counselors, Probation Officers, Parole Officers, Reentry Specialists and Community Stakeholders
  - Educate and train practitioners in the field regarding offender employment
  - Purpose is to improve offender employment

This program is not specifically for MH but does not exclude due to mental illness



# Mental Health Pre/Post Release GAPS & BARRIERS



- Stigma of being mental health and “ex-offender”
- Release of Info Notification - MH Unit & Community Supervision
  - Communicating release notification/information to the field
  - Appointments
  - Medications
- Involuntary Hospitalizations (1013) with DBHDD
- Delays with CSB/Community MH appointments/”Lost to Care”
- Additional 30 day psychotropic medication prescription
- Lack of resources/services
- Poor “Wrap-Around” services for release



# Re-Entry Services



# Returning Citizen Profile

## Seek Knowledge and Understanding

- Master and integrate core academics: English/language arts, math, social studies and science
- Pursue continuous learning
- Understand personal financial responsibilities and actions

## Think Critically and Solve Problems

- Define problems and create solutions
- Apply knowledge and skills to real-world situations
- Reflect on and adapt to an ever-changing world

## Listen, Communicate and Interact Effectively

- Communicate responsibly and effectively through reading, writing, listening, and speaking
- Work cooperatively with others
- Develop and maintain positive relationships



Georgia Department of Corrections  
Brian Owens, Commissioner  
300 Patrol Road  
Forsyth, GA 31029

## Exhibit Strong Personal Qualities

- Identify, pursue, and persist in achieving personal goals
- Exhibit a strong work ethic
- Accept responsibility for personal actions
- Advocate for self and others
- Maintain wellness and balance in life
- Contribute to the well-being of the community

## Engage and Compete in a Global Environment

- Prepare for college and career readiness
- Master transformational technologies
- Possess multilingual skills
- Develop awareness of national and world issues and events, and their impact
- Understand and respect one's own culture and other cultures



# Current Probationers with a Mental Health Profile



- Probationers on Mental Health Caseloads  
– 2,879
- Probationers with a MH Profile of level 2  
and up  
– 12,184





# Community Supervision



- Mental Health Screening Form
  - Completed at intake on every offender
- Day Reporting Center (15)
  - 27% of population is MH
  - Mental Health Counselors
    - Masters Degree in Social Work, Counseling, Psychology or Nursing.
  - Mental Health Clinicians: 5 working in DRCs
- Supervision Model Enhanced
  - Special Level
    - Mental Health-Chronic care needed (Acting Out)
    - Mental Health Reentry (ITF and Level 3 Releases)
- Mental Health Probation Officer Specialists
  - Establish Mental Health Caseloads
    - Cap at 40
  - Specialized training
    - **Regional Crisis Intervention Training—CIT (National Alliance on Mental Illness—NAMI)**
    - PO Basic Training—Comprehensive Crisis Training—CCT (Probation and Parole Officer Basic Training)
    - Mental Health First Aid
    - Annual MH Training



# Residential Substance Abuse Treatment Centers (RSATS) For Community Offenders



Program Model	Residential Substance Abuse Treatment (RSAT) Facilities	Location (City/County)	Prg Length (months)	# of beds	Annual Throughput
<b>Integrated Treatment</b>	Appling Dual Diagnosis RSAT (male)*	Baxley (Appling Co.)	9	192	256
	West Central Dual Diagnosis RSAT (female)*	Zebulon (Pike Co.)	9	192	256
<b>Total Integrated Treatment Beds</b>				<b>384</b>	<b>512</b>
<b>Probation Therapeutic Community</b>	Arrendale RSAT (female)	Alto (Habersham Co.)	9	198	396
	Bainbridge RSAT (male)	Bainbridge (Decatur Co.)	9	384	768
	Turner RSAT (male)*	Sycamore (Turner Co.)	9	192	384
	Northwest RSAT (male)	Rock Springs (Walker Co.)	9	200	400
	Coastal State Prison RSAT (male)	Garden City (Chatham Co.)	9	150	300
<b>Total Probation RSAT Beds</b>				<b>1,124</b>	<b>2,248</b>
<b>Total Beds</b>				<b>1,508</b>	<b>2,760</b>



# Community Service Boards Services Clinic-Based Services



- Medical-Psychiatric Services
- Crisis Evaluation and Intervention
  - 24 hour unit
  - MH Crisis
  - Detox from SA
  - Average length of stay 5 days
- Individual Therapy
- Group Therapy and Skills Training
- Family Therapy
- Medical Assistance



# Community Service Boards Services Day Programs



- Psychosocial Rehabilitation
- Intensive Treatment
- Mental Health Peer Supports
- Addictive Disease Peer Support



# Community Service Boards Services

## Community-Based Services



- **Community Support Team (CST)**
  - Intensive support of individuals with Severe MI
  - After discharge from a hospital after multiple or extended days
  - Intended to decrease hospitalization, incarcerations, arrests
- **Case Management and Community Support Team**
  - Work in concert with basic outpatient core services
- **Assertive Community Treatment**
  - Hospital on wheels
  - Serious MH



# Community Service Boards Services Wrap-Around Services



- Residential Services and Supports
- Homeless Services
- Supported Employment Services
- TANF (Temporary Assistance for Needy Families) Women's Addiction Recovery Services
- Specialty Court Services
- Addictive Disease Support Services
- Case Management
- Community Support Team
- Assertive Community Treatment



# Reentry and Transitional Service



- **Mental Health America of Georgia**
  - <http://www.mhageorgia.org> 1-800-933-9896
  - <http://wwwcicit.net/nmhag>
- **National Alliance on Mental Illness Georgia**
  - <http://wwwnamiga.org/> 1-800-728-1052
- **GA Mental Health Consumer Network**
  - <http://gmhcn.org/> 1-800-297-6146



# Reentry and Transitional Service



- **Community Service Boards**
  - 26 Independent CSBs in Georgia
  - Part of the state health department (Dept. of Public Health) system
  - List of State Health Departments BY HEALTH DISTRICT/County:
    - <http://dph.georgia.gov/public-health-districts>
- **Georgia Crisis & Access Line**
  - Resource DataBase - Call 800-715-4225 or search by location at:
    - <http://www.mygcal.com/>
- **Positive Impact**
  - Mental Health & Prevention programs for people affected by HIV
    - [www.positiveimpact-atl.org](http://www.positiveimpact-atl.org)





# Risk Reduction Programs



# Substance Abuse Services

## **Residential Substance Abuse Treatment (RSAT)**

- Offenders with a Substance Use Disorder are identified to attend a RSAT program prior to release
- RSAT's primary goal is for program participants to learn real-life ways to help them live a pro-social, productive life free of alcohol, drugs, and crime
- RSAT programs work with community programs to identify a continuum of care/ Aftercare when offenders are released
- There are 12 RSAT programs, including 2 new RSATs
  - Paulding & Bleckley



# Substance Abuse Services

## **Addiction Certification Preparation Program (ACPP)**

- ACPP provides the necessary educational hours needed for staff to take the test to become Certified Addiction Counselors
- ACPP aims at increasing the number of credentialed staff within GDC.
- Research supports that having qualified staff provide Substance Abuse programming increases the offender's success at recovery
- 102 staff has completed the ACPP to date



# Housing and Transition Services

## The Program & Treatment Completion Certificate

- In 2014 the Georgia Legislature passed into law O.C.G.A. § 42-2-5.2© which directed that the Board of Corrections: “shall create a Program and Treatment Completion Certificate that may be issued to offenders under the rules and regulations of the board. Such certificate shall symbolize an offender's achievements toward successful reentry into society.”
- An official printout issued to offenders that document their achievements towards successful reentry into society. Eligible offenders who receive a PTC are encouraged by staff to utilize the certificate when looking for employment, applying to attend technical schools or further their education, seeking appropriate housing, and whenever the need for explanation of gap in employment or residence needs to be explained
- The software is presently being piloted in seven institutions (Arrendale SP, ASMP, Central SP, Coastal TC, Macon TC, Phillips SP, and Rutledge SP)



# Housing and Transition Services

- Reentry programs must incorporate the principles of effective intervention in order to achieve the required results of reducing recidivism and making Georgia a safer place to live.
- This begins when the offender is assessed and a case plan is developed by Counseling Staff to ensure that offenders receive the treatment that is needed for their successful reentry to society.
- Research supports that Cognitive Behavioral Treatment approaches are the best type of programs for this population.
- Changing how and why they made the decisions they made in the first place is paramount to successful reentry and reintegration to society.
- Risk Reduction Services ensures that all the programs that we support are evidenced based and have been proven by research that they have an impact on reducing recidivism.



# Housing and Transition Services

- Reentry programs must incorporate the principles of effective intervention in order to achieve the required results of reducing recidivism and making Georgia a safer place to live.
- This begins when the offender is assessed and a case plan is developed by Counseling Staff to ensure that offenders receive the treatment that is needed for their successful reentry to society.
- Research supports that Cognitive Behavioral Treatment approaches are the best type of programs for this population.
- Changing how and why they made the decisions they made in the first place is paramount to successful reentry and reintegration to society.
- Risk Reduction Services ensures that all the programs that we support are evidenced based and have been proven by research that they have an impact on reducing recidivism.



# Sex Offender Support

## **SOPP**

- GDC ensures that sex offenders have completed SOPP Psycho-Educational Program prior to being released from prison
- Counselor ensures that Sex Offenders have registered prior to being released
- Counselors contact the probation officer prior to the offender's release



# Sex Offender Support

**Sex Offender Information**  
**Inmates with a Sex Offender Profile**  
**Facilities – 10,337**  
**9,241 are required to register**

**Approximately 1000 Problem Residence Cases**  
**Cases that are eligible for release if suitable residence were**  
**available**  
**682 of the 1000 are Sex Offenders**

**Probation Caseload**  
**5,252**





# Veterans Program Services



# VETERANS REENTRY PROGRAM DORM



***“SERVING THOSE WHO HAVE SERVED US”***

## **MISSION**

The Veterans Reentry Program Dorm provides opportunities for incarcerated Veterans to live in a supportive environment that helps to rebuild individual character, courage and commitment, while providing services and programs that provide opportunities for positive change. This will assist in mending lives, healing families, and the offenders in making a successful, seamless transition and reentry from incarceration to the community.

## **VISION**

The Georgia Department of Corrections has the best Veterans Reentry Program Dorm in the nation which makes the public safer and provides effective opportunities for offenders to achieve positive change.

***“NO SOLDIER LEFT BEHIND”***



# VETERANS REENTRY PROGRAM DORM



## Veterans Reentry Program Dorm Sites:

Rutledge SP

Johnson SP

Emanuel Women's Facility





# VETERANS REENTRY PROGRAM DORM





# Re-Entry: Making Hopes Come to Reality

**There is a dialogue near the end of the movie, “Shawshank Redemption” that includes some of the following:**

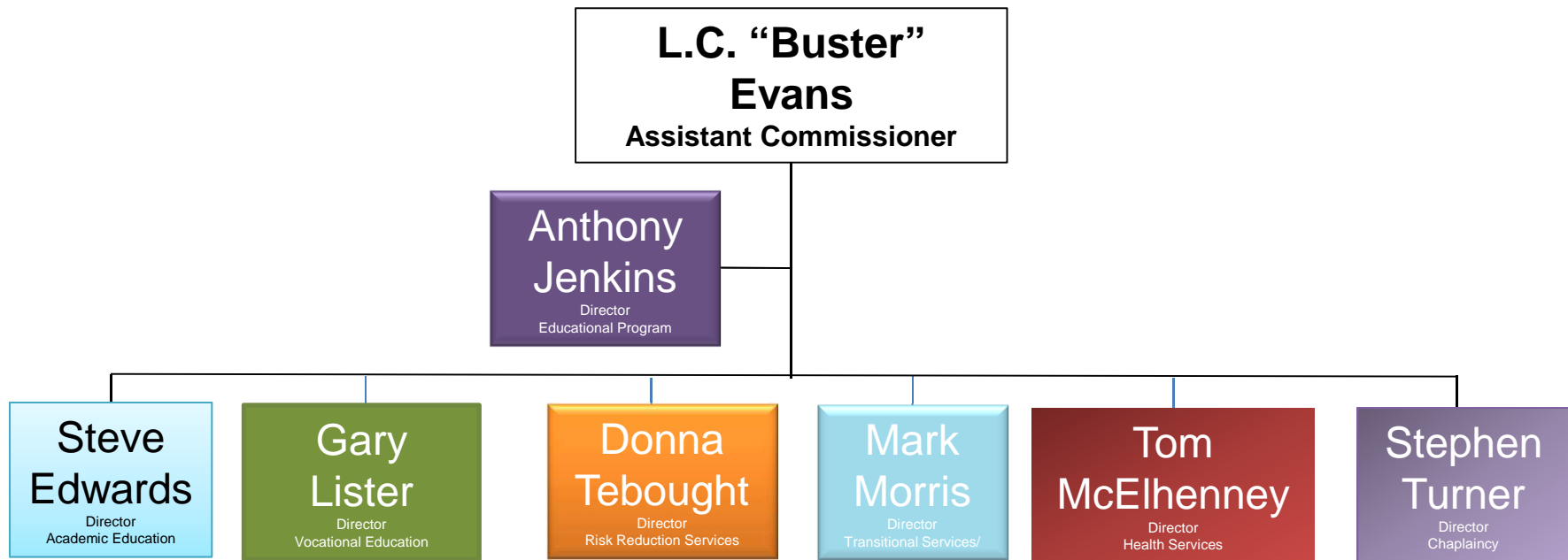
RED: I have to remind myself that some birds aren't meant to be caged. Their feathers are just too bright. And when they fly away, the part of you that knows it was a sin to lock them up does rejoice. Still, the place you live in is that much more drab and empty that they're gone. I guess I just miss my friend.

ANDY: Remember Red, hope is a good thing, maybe the best of things, and no good thing ever dies.

RED: I find I'm so excited that I can barely sit still or hold a thought in my head. I think it's the excitement only a free man can feel. A free man at a start of a long journey whose conclusion is uncertain. I hope I can make it across the border. I hope to see my friend and shake his hand. I hope the Pacific is as blue as it has been in my dreams. I hope.



# Division of Inmate Services



- [Buster.Evans@gdc.ga.gov](mailto:Buster.Evans@gdc.ga.gov)
- [Anthony.Jenkins@gdc.ga.gov](mailto:Anthony.Jenkins@gdc.ga.gov)
- [Stevie.Edwards@gdc.ga.gov](mailto:Stevie.Edwards@gdc.ga.gov)
- [Steven.Turner@gdc.ga.gov](mailto:Steven.Turner@gdc.ga.gov)
- [Gary.Lister@gdc.ga.gov](mailto:Gary.Lister@gdc.ga.gov)
- [Donna.Tebought@gdc.ga.gov](mailto:Donna.Tebought@gdc.ga.gov)
- [Mark.Morris@gdc.ga.gov](mailto:Mark.Morris@gdc.ga.gov)
- [Tom.McElhenny@gdc.ga.gov](mailto:Tom.McElhenny@gdc.ga.gov)